



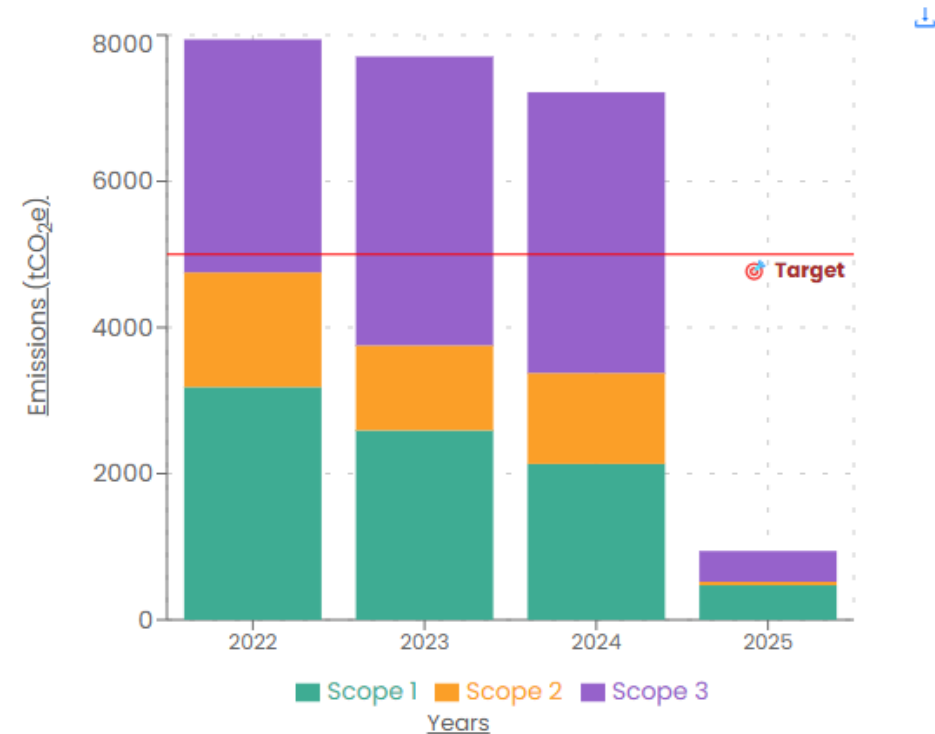
Sustrax Sustainability Tracking Platform

Empower your organisation to effectively manage carbon emissions with Sustrax. This comprehensive platform transforms how businesses track, analyse, and report their progress to Net Zero.



Yearly Analysis [View →](#)

Demo Company



Developed to Meet Your Sustainability Needs

1

Global Collaboration

Work together across geographies and time zones. Break down silos in your sustainability efforts.

2

Meaningful Progress Tracking

Monitor improvements and drive actionable change with data-driven insights.

3

Timely Carbon Insights

Access real-time data on carbon management and reduction initiatives.

4

GHG Protocol Compliance

Generate reports that follow global standards for carbon accounting and disclosure.

Achieve Your Compliance Goals

Reporting Type	Capabilities
GHG Protocol Reporting	Automatically categorises emissions by source and GHG Protocol Scope 3 categories.
Compliance Reporting	Compliance with the carbon calculation related aspects of UK and international requirements*
Voluntary Disclosure	Supports SBTi and CDP initiatives with comprehensive emissions data.
Dual Reporting	Provides location-based and market-based electricity reporting



*including, Streamlined Energy and Carbon Reporting (SECR), Procurement Policy Note 06/21 (PPN 06/21), Securities and Exchange Commission (SEC), Corporate Sustainability Reporting Directive (CSRD), International Sustainability Standards Board (ISSB), and Task Force on Climate-related Financial Disclosures (TCFD).

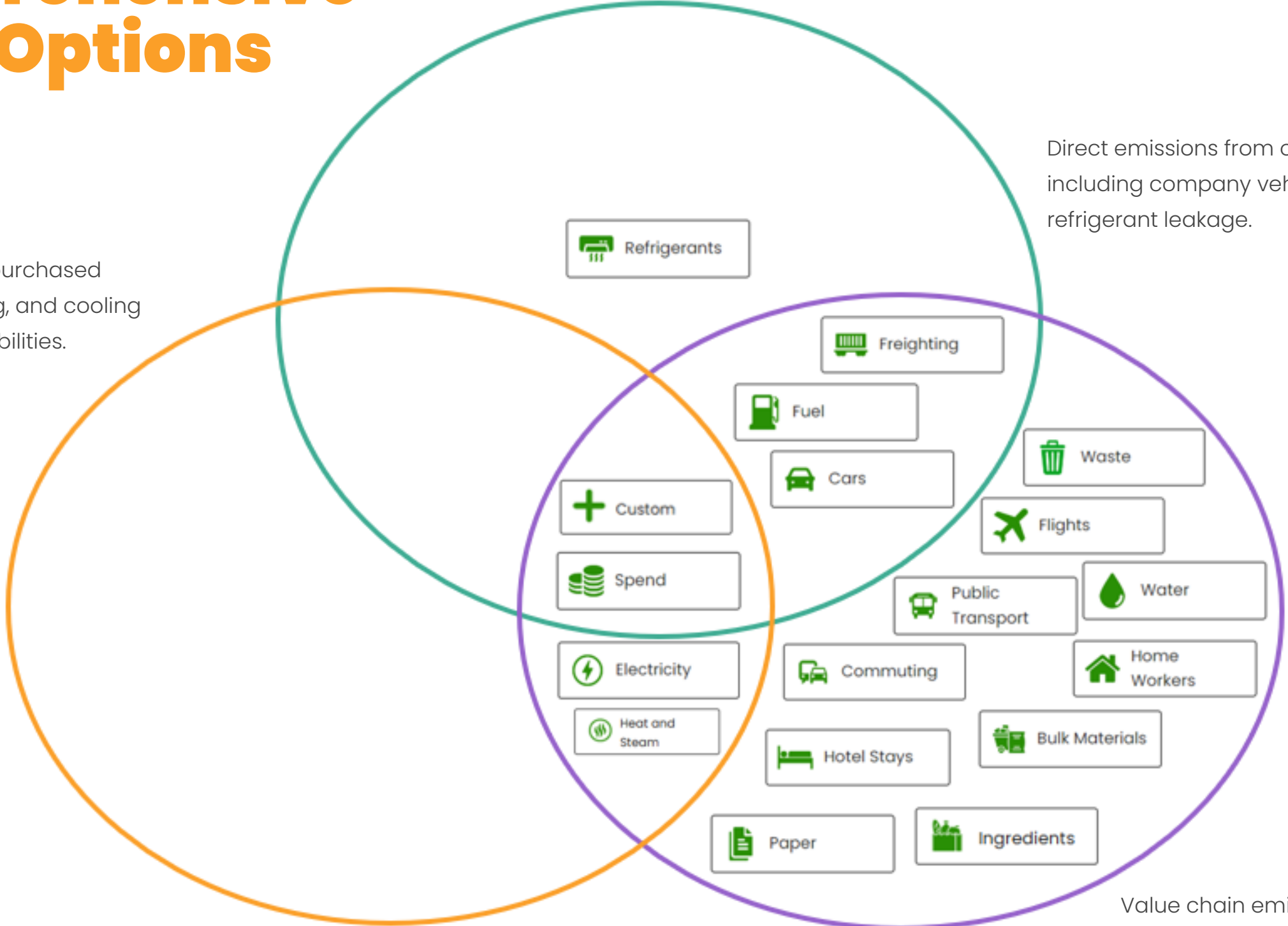
Comprehensive Input Options

Scope 2

Indirect emissions from purchased electricity, steam, heating, and cooling with dual reporting capabilities.

Scope 1

Direct emissions from owned or controlled sources including company vehicles, on-site fuel combustion, and refrigerant leakage.



Scope 3

Value chain emissions covering all 15 GHG Protocol categories from purchased goods to investments.

Multiple Data Input Methods

Direct Manual Entry Forms

Fuel Tutorial Bulk Upload

Instructions
Enter the amount of energy used at each site of operation. Copies of utility bills can be linked in the 'Additional Data' section to the right.

Select site Head Office

End Date Select date
E.g., if the bill covers electricity from 1st January to 31st January, the end date is 31st January. This is NOT the same as the date the bill is sent out/received or invoice date.

Fuel Category Select an option

Amount
Amount of fuel used in the unit of measure specified above.

Additional Data

Link e.g. Sharepoint or Google Dr...

Data Tag Select a tag

Cost GBP

Comments

Drag & drop file or browse

Input data directly through intuitive web forms with built-in validation and guidance notes and videos.

Bulk Upload Templates

Select Form Upload Sheet Review Page

Fuel Bulk Upload

Please review data below before uploading.

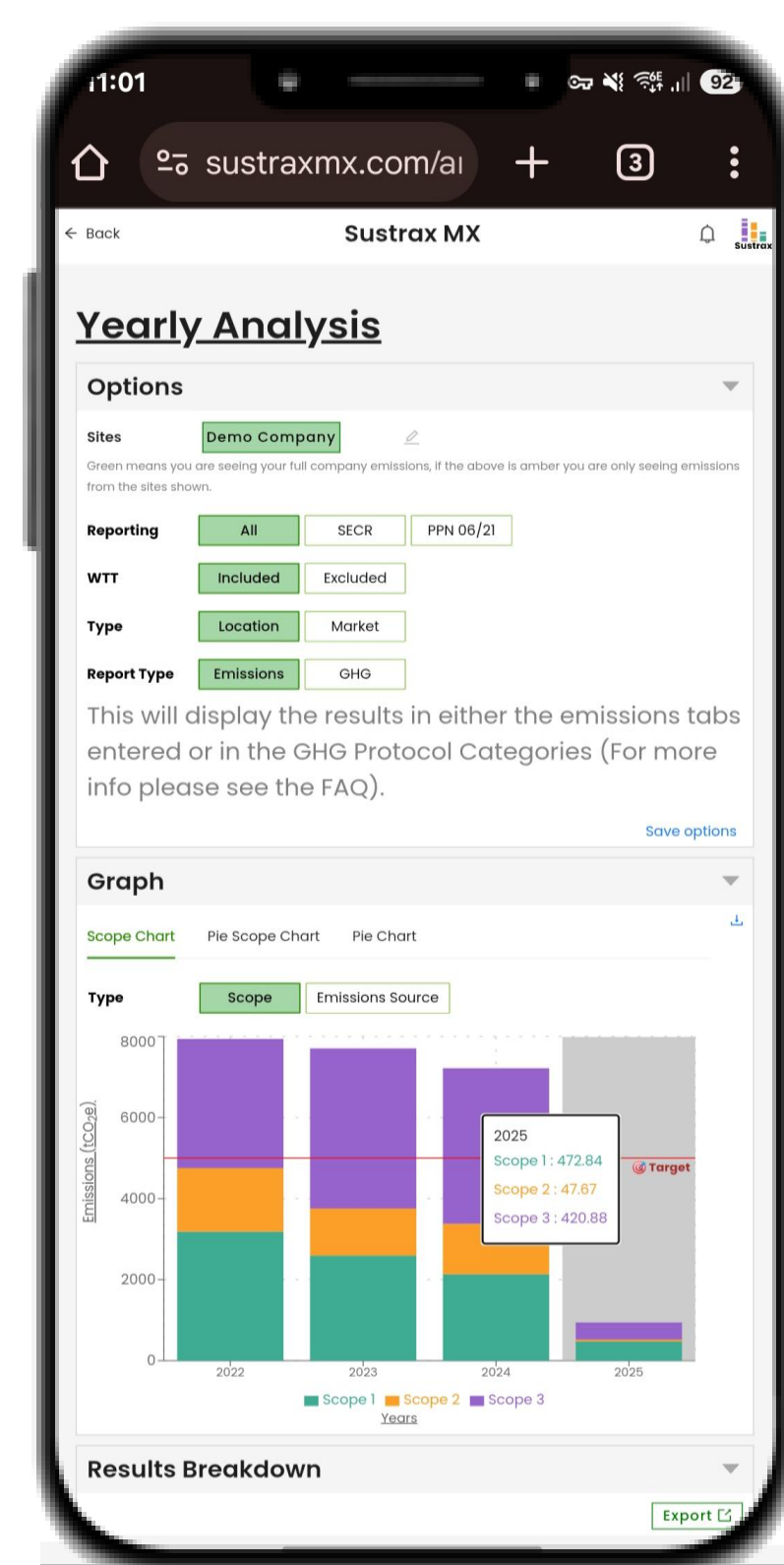
1 out of 3 rows have error.
Please correct them before uploading.

Combined Emissions **14.93** = Emissions **12.81** + WTT Emissions **2.12**

Download Error Rows

No.	Site	Fuel Type	Amount	End Date	Fuel Category	Unit of Measure	Result	Comment	Data Link	Data Tag	Cost	Options
1)	Head Office	Natural gas	5	27/01/2023	Gaseous fuels	tonnes	12.81					
2)	Bee House	Natural gas	5	28/01/2023	Gaseous fuels		Result not calculated. Please click here.					
3)	Horn House	Natural gas	5	29/01/2023	Gaseous fuels	kWh (Gross CV)	<0.01					

Save time with standardised Excel templates for importing large datasets across multiple sites. Across all input tabs and with built in error checking.



Role-Based User Hierarchy

Optional: Group Admin

Full control over all companies and settings. Ideal for sustainability teams managing multiple entities.

Company Admin

Manages all users and company metrics. Perfect for sustainability managers in individual companies.

Site Admin

Controls users and details for specific locations. Designed for facility managers and site teams.

Data Input/Editor

Enters, views, and edits data for assigned sites. For departmental users responsible for data entry.

Viewer

View-only access for assigned sites. Ideal for external stakeholders like verifiers.

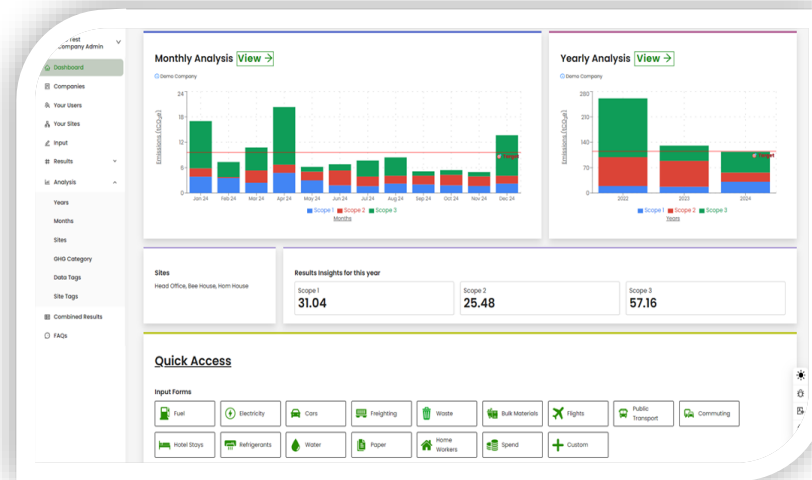
Powerful Reporting Capabilities



Carbon Footprint Verification Service Included

- Provided by experienced Carbon Footprint consultant
- Audit process follows GHG Protocol and ISO14064-3
- Verification of 12-months data input into Sustrax
- **Full Verification report and statement**
- Carbon Assessed Standard

Anytime



Detailed Emissions Charts

Visualise your carbon footprint across scopes, time periods, and business units.

No.	Type	Company	Site	Date entered	Details 1	Details 2	Amount	CO2 emissions (tCO2e)	CH4 emissions (tCO2e)	Overall Total (tCO2e)	Options
1	Fuel	Demo Company	HeadOffice	30/09/2023	Fuel Type	Natural gas	9000	88	0.31	214	£DQ
2	Fuel	Demo Company	HeadOffice	30/09/2023	Fuel Type	Natural gas	9000	88	0.31	214	£D
3	Fuel	Demo Company	HeadOffice	10/09/2024	Fuel Type	Natural gas	25	0.06	0.03	0.07	£DA
4	Fuel	Demo Company	HeadOffice	30/09/2023	Fuel Type	Natural gas	9000	88	0.31	214	£D
5	Fuel	Demo Company	HeadOffice	30/09/2023	Fuel Type	Natural gas	9000	88	0.31	214	£D

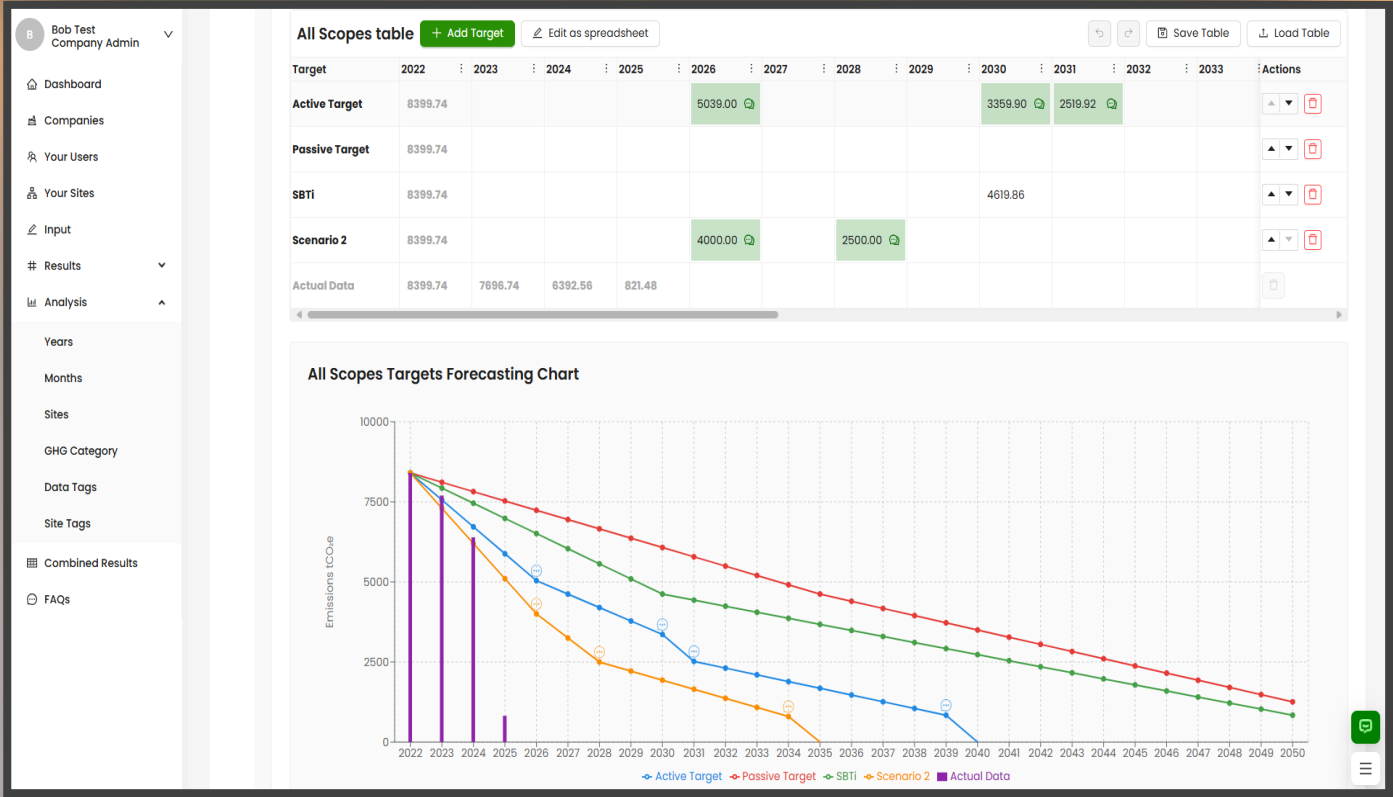
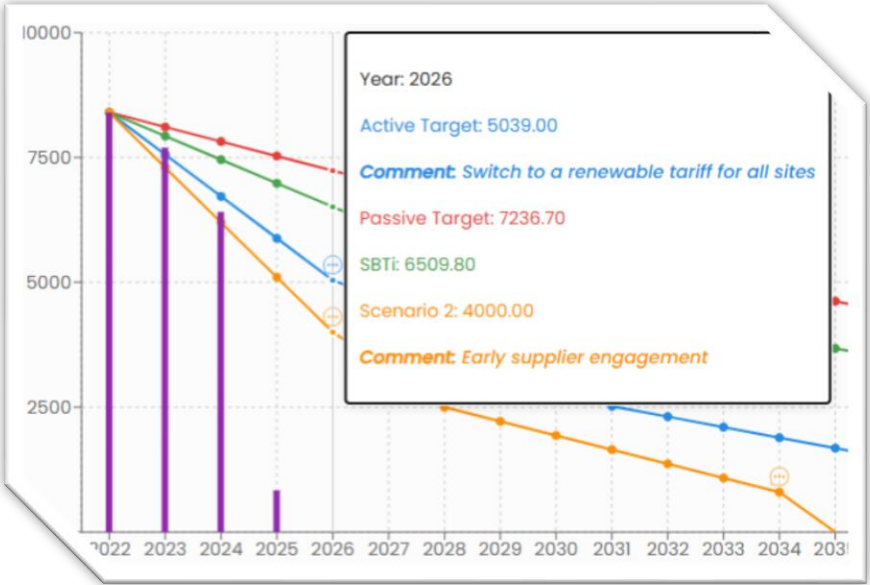
Management Ready Exports

Export all your data in spreadsheet format at any time for seamless integration with BI systems and offline data analysis

Net Zero Visualisation & Target Tracking

Monitor your progress towards sustainability goals with intuitive visuals.

Set a variety of targets and track progress towards them.





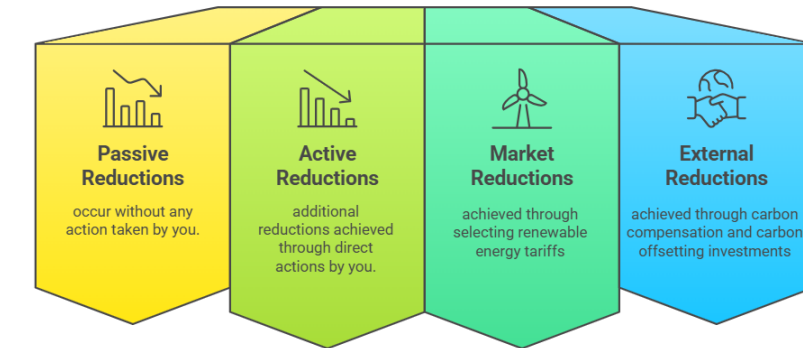
Optional: Net Zero Target Setting Service and Assistance

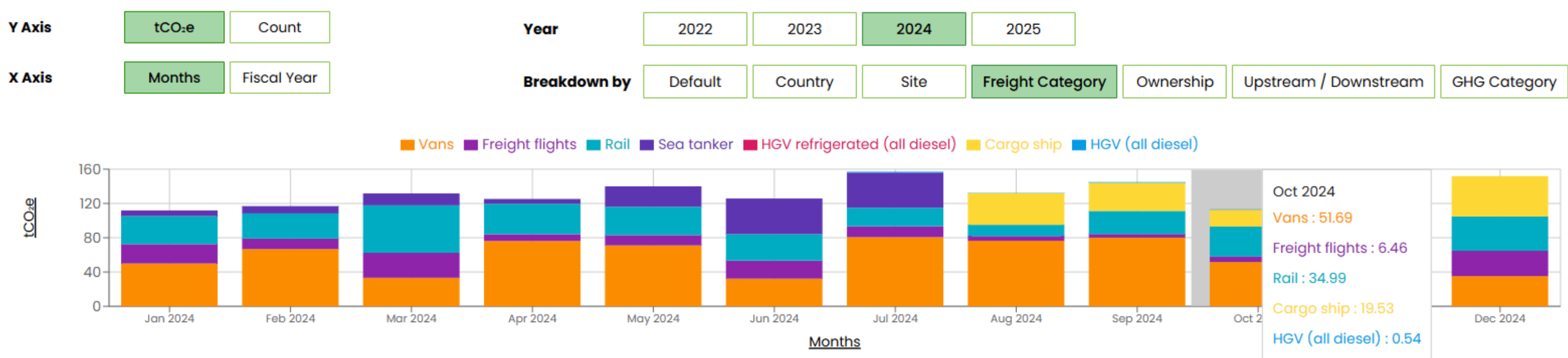
Carbon Footprint Ltd support companies to develop a robust and effective strategy for reducing their emissions and achieving Net Zero.

Carbon Footprint Ltd offer to provide:

- An experienced environmental consultant to lead the Net Zero Target Setting.
- Initial analysis of targets considering Passive, Active, Market and External Reductions/Removals.
- Assessment and comparison with industry benchmarks from Science Based Targets (SBTs).
- A Net Zero Target Setting Workshop.
- A final Net Zero Target Setting report.

Emission Reduction Methods





The Sustrax Advantage

Cost-Effective Solution

Pricing structure scales with your needs. Delivers significant ROI through efficiency gains.

Expert Support

Backed by Carbon Footprint Ltd's extensive experience. Access specialist knowledge throughout your Net Zero journey.

Continuous Development

Regular updates incorporate the latest methodologies. New features added based on client feedback and evolving reporting requirements.

Complete Flexibility

Configurable to your organisation's structure and goals. Adapts to evolving reporting requirements and business needs.



Get Started Today

Book a Demo

See Sustrax MX in action with a personalised demonstration. Experience how it addresses your specific challenges.

Implementation Plan

Our experts will create a tailored onboarding strategy. We'll identify data sources and establish reporting requirements.

Training & Support

Comprehensive training ensures quick adoption. Ongoing support guarantees maximum value from the platform.

Continuous Improvement

Regular reviews help optimise your carbon management. We'll keep you updated with best practices and innovations.

Why Select Carbon Footprint Ltd?

Carbon Footprint Ltd is the first choice for hundreds of organisations. These range from SMEs to multinational blue-chip corporations.



- We have been providing online carbon footprint calculation systems for over 18 years
- We believe in carbon reduction 'at source' as the 'gold standard' for climate change mitigation.
- We are also passionate about supporting decarbonisation globally as rapidly as possible.
- Many leading brands select us to assess their emissions.
- We have a team of dedicated environmental consultants providing high levels of customer service and flexibility.
- We bring our core values of sustainability, innovation and flexibility to all our projects.
- We are ISO 14001:2015 and ISO 9001:2015 certified.

Would Recommend



4.61 Average Rating

Quality Of Work



4.53 Average Rating

Responsiveness



4.42 Average Rating

Value For Money



4.46 Average Rating



Contact Us

Email: info@carbonfootprint.com

Tel: +44 (0)1256 592599

